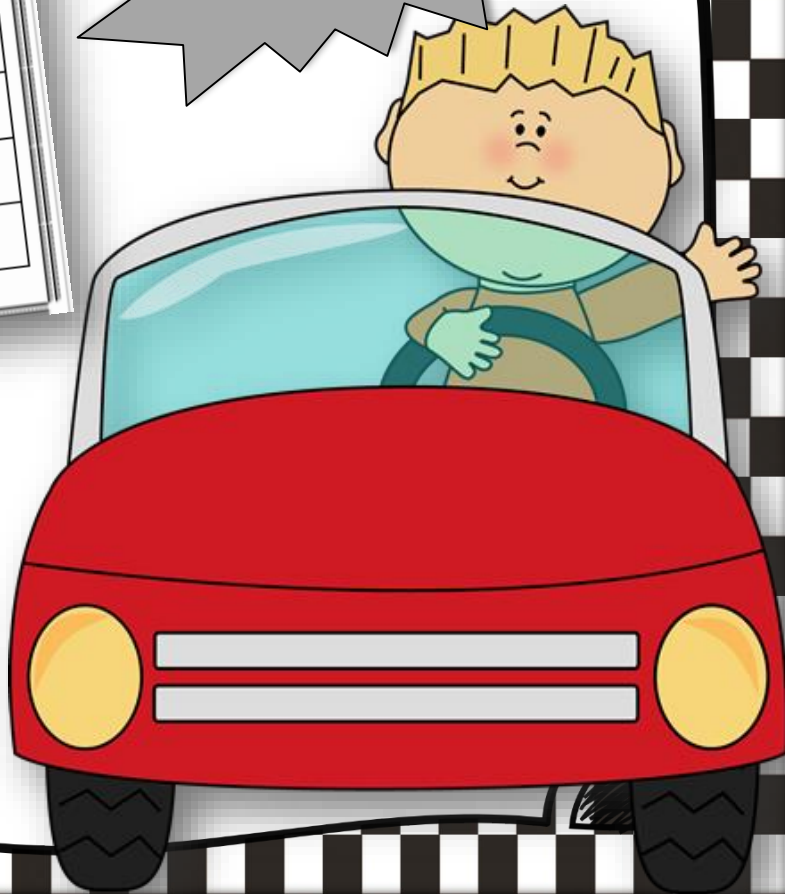


# RACE STRATEGY

A Writing Strategy for  
Responding To Text Dependent  
Questions!

Common  
Core  
Aligned!



**R**estate the question.  
- Write one or more of Sarah's feelings in chapter one.  
- Sarah feels very different ways in chapter one.

**A**nswer the question in your own words.  
- She feels angry at first, then content when she happens.

**C**ite from text.  
- Give evidence for proof from the text.  
- For example, on page 223, she writes:

**E**nd your response.  
- Write your opinion or ending.  
- As you write, think about Sarah's experiences in chapter one.

**RACE STRATEGY**  
For Strong Writing Responses


R	Restate the question
A	Answer in your own words
C	Cite from text
E	End your response

**Flipbook Page 1**

Directions: Cut out the flipbook responses from page 1 & 2. Give page 20 responses of 4 pieces of evidence from the text. Use the RACE strategy to organize the ideas of your response.

R	Restate the question
A	Answer in your own words
C	Cite from text
E	End your response

Cut around the entire rectangle.  
Cut along for the flipbook pages (on the dotted lines).  
You will glue the tab to page 2.



# Table of Contents

- Common Core Alignment Slide 3
- RACE Poster with examples Slide 4
- RACE Poster with no examples Slide 5
- RACE Foldable page 1 Slide 6
- RACE Foldable page 2 Slide 7
- RACE Graphic Organizer Slide 8
- Clip Art Credits Slide 9
- Thank You! Slide 10

# Common Core Alignment

3<sup>rd</sup> Grade

[CCSS.ELA-LITERACY.RL.3.1](#)

Ask and answer questions to demonstrate understanding of a text, referring explicitly to the text as the basis for the answers.

[CCSS.ELA-LITERACY.RL.3.5](#)

Refer to parts of stories, dramas, and poems when writing or speaking about a text, using terms such as chapter, scene, and stanza; describe how each successive part builds on earlier sections.

[CCSS.ELA-LITERACY.W.3.1.B](#)

Provide reasons that support the opinion.

4<sup>th</sup> Grade

[CCSS.ELA-LITERACY.RL.4.1](#)

Refer to details and examples in a text when explaining what the text says explicitly and when drawing inferences from the text.

[CCSS.ELA-LITERACY.RL.4.3](#)

Describe in depth a character, setting, or event in a story or drama, drawing on specific details in the text (e.g., a character's thoughts, words, or actions).

[CCSS.ELA-LITERACY.W.4.2](#)

Write informative/explanatory texts to examine a topic and convey ideas and information clearly.

5<sup>th</sup> Grade

[CCSS.ELA-LITERACY.RL.5.1](#)

Quote accurately from a text when explaining what the text says explicitly and when drawing inferences from the text.

[CCSS.ELA-LITERACY.RL.5.3](#)

Compare and contrast two or more characters, settings, or events in a story or drama, drawing on specific details in the text (e.g., how characters interact).

[CCSS.ELA-LITERACY.W.5.2](#)

Write informative/explanatory texts to examine a topic and convey ideas and information clearly.

6<sup>th</sup> Grade

[CCSS.ELA-LITERACY.RL.6.1](#)

Cite textual evidence to support analysis of what the text says explicitly as well as inferences drawn from the text

[CCSS.ELA-LITERACY.W.6.2](#)

Write informative/explanatory texts to examine a topic and convey ideas, concepts, and information through the selection, organization, and analysis of relevant content.

7<sup>th</sup> Grade

[CCSS.ELA-LITERACY.W.7.1.B](#)

Support claim(s) with logical reasoning and relevant evidence, using accurate, credible sources and demonstrating an understanding of the topic or text.

[CCSS.ELA-LITERACY.W.7.2](#)

Write informative/explanatory texts to examine a topic and convey ideas, concepts, and information through the selection, organization, and analysis of relevant content.

**R**estate the question.

- What are some of Sarah's feelings in chapter one?
- Sarah feels many different ways in chapter one. .

**A**nswer the question.

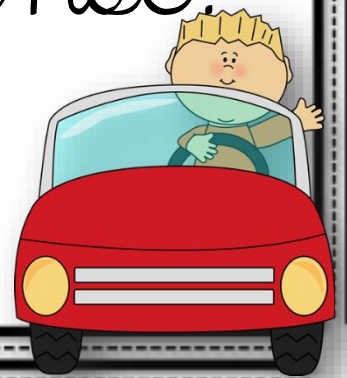
- Answer the question in your own words.
- She feels angry at first, then content, and finally she is happy. . .

**C**ite from text.

- Give evidence or proof from the text for support.
- For example, on page 23, the author states"...".

**E**nd your response.

- Create your conclusion or ending
- As you can see, Sarah experiences multiple feelings in chapter one.

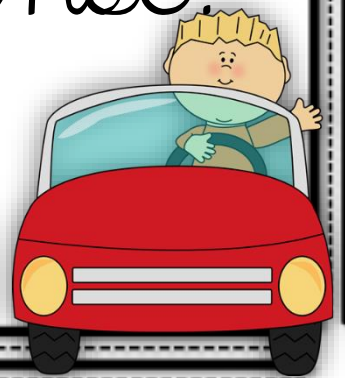


**R**estate the question.

**A**nswer the question.

**C**ite from text.

**E**nd your response.

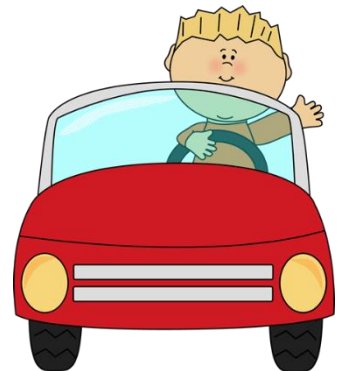


# Flipbook Page 1

Directions: Cut out the flipbook templates from pages 1 & 2. Glue page 2's template on a piece of construction paper. Glue page one on top of page 2 - **ONLY** the specified line. Use the RACE poster to complete the inside of your flipbook.

<b>WRITING RESPONSE STRATEGY</b>	E
	C
	A
	R

- Cut around the entire rectangle.
- Cut slips for the flipbook pages (on the dotted lines.)
- You will glue the tab to page 2.

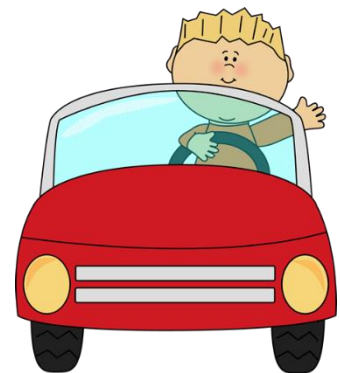


# Flipbook Page 2

Directions: Cut out the flipbook templates from pages 1 & 2. Glue page 2's template on a piece of construction paper. Glue page one on top of page 2 - **ONLY** the specified line. Use the RACE poster to complete the inside of your flipbook.

Glue page one tab here.	

- ONLY cut this out around the entire rectangle.
- Do NOT cut out the smaller rectangles.
- You will glue p. 1 on top of this. (Where it specifies.)
- Fill in the information using the RACE poster.



# RACE STRATEGY

*For Strong Writing Responses*

Question:

Blank area for writing the question.

**R**

Restate  
the  
question

**a**

Answer in  
your own  
words.

**C**

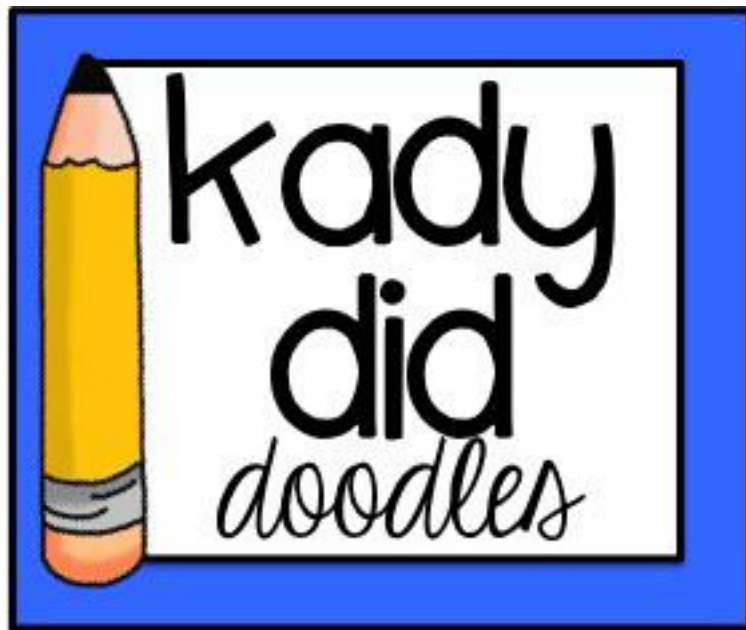
Cite  
evidence.  
Prove it!

**e**

End/conclude  
your answer.



# Clipart Credits



# Thank You!

I am so grateful that you chose to download this product! Please don't forget to like my TPT store, leave feedback, and visit my blog.

Again,  
THANK YOU, THANK YOU, THANK  
YOU! 😊

<http://www.atouchofclassteaching.com>



<http://www.teacherspayteachers.com/Store/A-Touch-Of-Class-Teaching>

**Disclaimers:**

The Common Core Standards were written and developed by The National Governors Association Center for Best Practices and Council of Chief State School Officers.

Any claims of alignment to the CCSS Standards are only by Stephanie Kirk. These claims have not been read, evaluated, or approved by the National Governors Association.